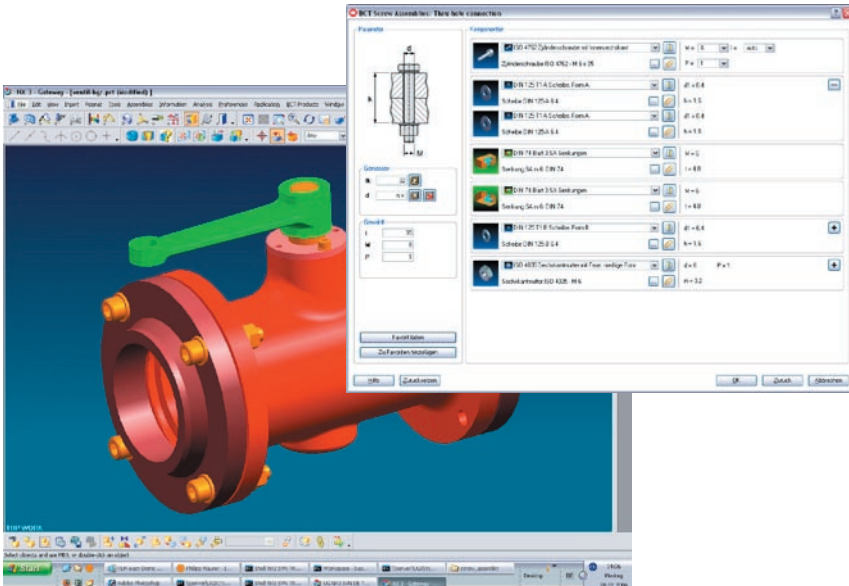


BCT Engineering Package

Management system to manage parts and features and to facilitate re-use in product development within NX

The BCT Engineering Package provides designers with a comprehensive starter package of the most common standard and catalog parts as well as their corresponding design features.

It can also be used as a CAD-integrated management system to find existing company specific design elements and to facilitate standardization in product development. It can be used in native CAD or integrated with PLM environments.



Basic functionality:

- management of parts, part families, user defined features, assemblies and engineering templates in a single customized user interface
- the starter package includes access to NX native content (50 free selectable parts and features) based on DIN, ISO, MS, JIS standards
- customer specific components, manufacturer catalogs and other 2D/3D CAD data types (e.g. NX, STEP, Parasolid, IGES, DXF) can be easily integrated using the comprehensive administration capabilities of the system
- spreadsheet technology provides multiple filtering and searching options, identification of alternatives, flexible configuration of the search criteria
- screw assembly functionality guarantees an associativity of the parts used (screw, nut, washer) and the features like a clearance hole, additionally it provides the possibility to control the possible combinations and to provide company specific configurations
- mapping of company specific combinations of parts and features into pre-configured combinations called Engineering Templates, which create libraries of intelligent, pre-defined part and feature combinations
- support of routing functionality
- standard feature control in the design process
- integrated checking of part status to support standardization in the product development process