

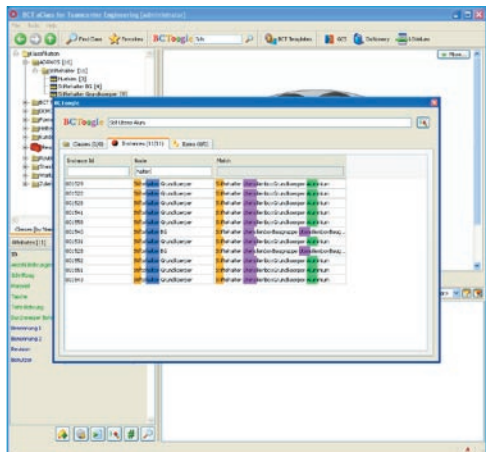
BCToogle

***Asked for by many, finally available:
full-text search for UGS Teamcenter***

BCToogle is an integral part of BCT aClass. Searches inside Teamcenter can be done like searching on the web. Any combination of item and classification information available in the Teamcenter data model can be searched for using BCToogle. Automatically finding all items that fit as the search is defined makes it easy. Once results are found, the integration of BCToogle in BCT aClass allows the search results to be directly used in the CAD system or as the starting point for additional queries using 3D geometrical* shape or classification attributes. Administrators can make use of BCToogle to clean up and structure existing Teamcenter databases.

A stand-alone version of BCToogle is now available at the BCT website (www.bct-technology.com). This downloadable version, BCToogle Basic, provides a pre-configured full-text search of Teamcenter Items, a real-time display of the search results as well as additional interactive filtering of attributes. Just download BCToogle and use it with your existing Teamcenter database.

BCToogle in BCT aClass



BCToogle basic functionality (stand-alone version):

- Search in Teamcenter Items
- Six pre-configured search attributes, three additional configurable search attributes
- Copy Item ID

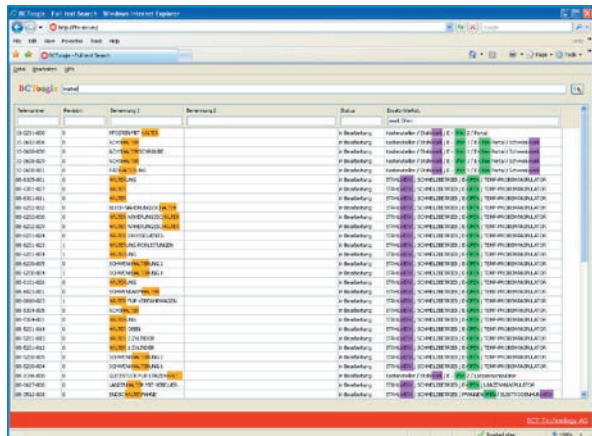
BCToogle in BCT aClass functionality:

- Search in items and classification
- Arbitrary number of search attributes
- Follows the UGS Teamcenter access rules
- Complete integration in BCT aClass and CAD, results can be immediately classified, 3D search based on the BCToogle search result is possible*)

BCToogle Basic can be downloaded for free at www.bct-technology.com and used on an existing UGS Teamcenter database.

*) uses Geolus Shape, see BCT aClass

BCToogle Basic (stand-alone)



The screenshot shows the BCToogle application window with a search results table. The table has columns for 'Subname', 'Revision', 'Description 1', 'Description 2', 'Date', and 'Order Number'. The data is filtered to show items with 'Revision' set to '0'. The table contains 20 rows of data, including item names like '1-1001-000', '1-1001-001', and '1-1001-002', along with their descriptions and dates.

Subname	Revision	Description 1	Description 2	Date	Order Number
1-1001-000	0	1-1001-000			
1-1001-001	0	1-1001-001			
1-1001-002	0	1-1001-002			
1-1001-003	0	1-1001-003			
1-1001-004	0	1-1001-004			
1-1001-005	0	1-1001-005			
1-1001-006	0	1-1001-006			
1-1001-007	0	1-1001-007			
1-1001-008	0	1-1001-008			
1-1001-009	0	1-1001-009			
1-1001-010	0	1-1001-010			
1-1001-011	0	1-1001-011			
1-1001-012	0	1-1001-012			
1-1001-013	0	1-1001-013			
1-1001-014	0	1-1001-014			
1-1001-015	0	1-1001-015			
1-1001-016	0	1-1001-016			
1-1001-017	0	1-1001-017			
1-1001-018	0	1-1001-018			
1-1001-019	0	1-1001-019			
1-1001-020	0	1-1001-020			